

Calculation of Multipanels

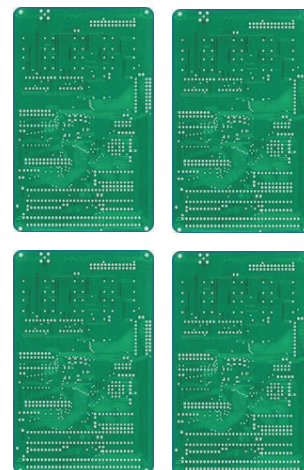
Multi - up, all boards < 1 dm²

Required minimum area is 1 dm². If your PCBs are smaller than 1 dm², we will automatically fill this area with as many boards as possible.

For a routing charge we will rout your boards singly.

Please provide only one common contour if your boards should not be separated!

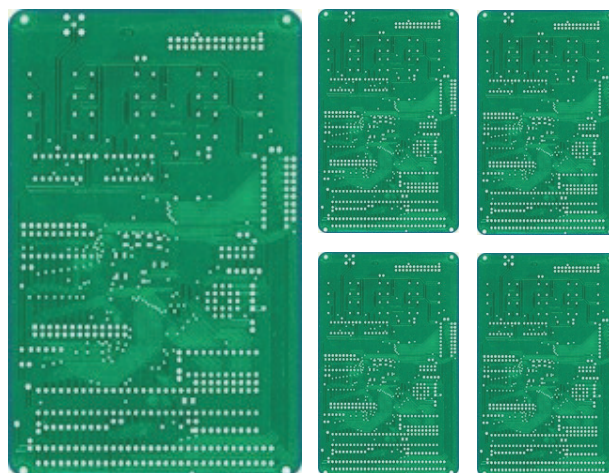
Alternatively a contour can be provided to hold the boards on pips and for a cam fee we will implement the routing path with pips. In these cases all charges (solder, pips etc.) will only be charged once.



Combined multi – up with boards < 1 dm² and boards > 1 dm²

If the multi – up consists of boards < 1 dm² and boards > 1 dm² they will be manufactured and charged separately:

Each board from any order which is > 1 dm² will be charged a mask fee, all combined boards < 1 dm² will be charged one mask fee and one routing fee.



Important:

Using drills to pre-separate your multi – up is not allowed, a routing contour with pips must be used instead.