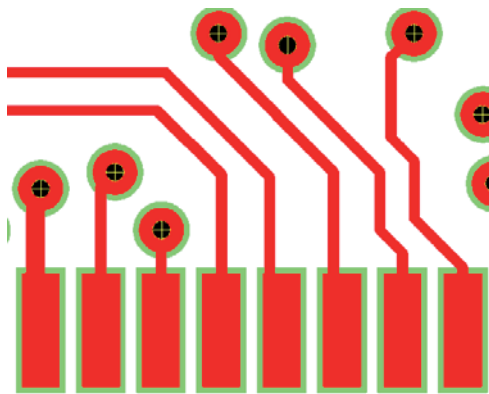
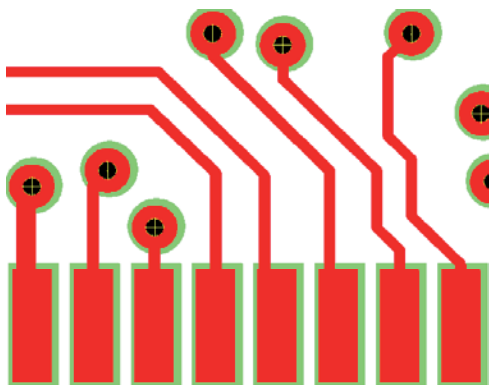
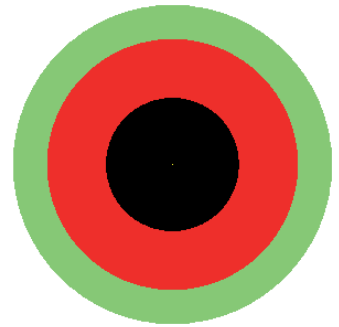


## Maximal permissible misalignment of soldermask on PTH



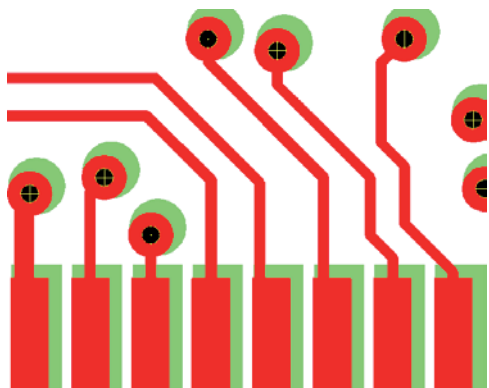
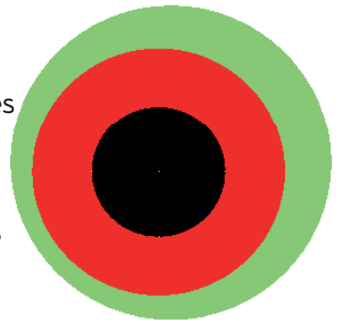
### Optimal

No misalignment of the soldermask



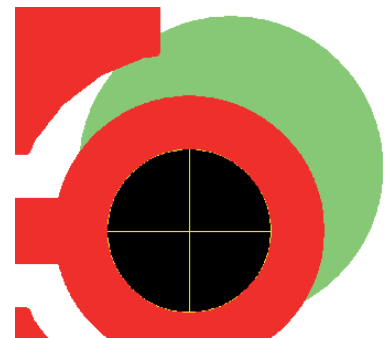
### Acceptable

Misalignment of the soldermask with the pad surface. However the soldermask does not contravene the minimum annular ring requirement. No soldermask in plated-thru holes, apart from those PTHs not intended for soldering. Neighbouring insulating pads & tracks are not affected.



### Nonconforming

Misalignment, which contravenes the minimum annular ring requirement. Soldermask in vias destined for component assembly. Neighbouring pads & tracks are also affected.



IPC-A-600G, Acceptability of Printed Circuit Boards