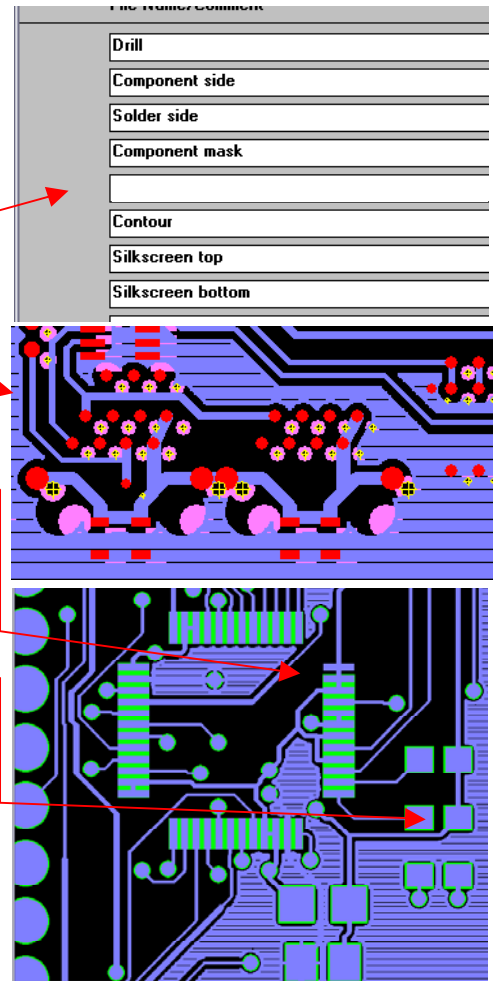


 **Important Information!**

All data will be checked before the boards go into production, however it is not possible to detect all problems on our side (for example it can not be verified if the net connections of the original layout are correct).

- 1) Are all layers existing as ordered ?
- 2) All layers, mask, silk and drill aligned and correctly mirrored ?
- 3) Smallest drill diameter 0,3mm ?
- 4) All pads free of mask ?
- 5) Is mask bigger than pads by 0,075mm ?
- 6) Minimum width of mask between pads not less than 0,15mm ?
- 7) Minimum track- / gap size in copper layers 0,15mm ?
- 8) Text in outer layers min. 0,15mm thick and not causing shorts ?
- 9) Pad/Via Restring > 0.4mm (pad size minus drill diameter) ?
- 10) Covering of vias correct ?
- 11) Customer instructions obeyed (e.g. special layers included) ?
- 12) All Copper min. 0,5mm clear from routing contour?



Limitations:

Shorts from the original layout cannot be found with the automatic Precam – check, nor can they be found with the final electrical test:

