	Routing	Id.- Nr.: CM-SO-003 Rev.: C Datum: 22.01.2008
---	----------------	--

 **Important Information!**

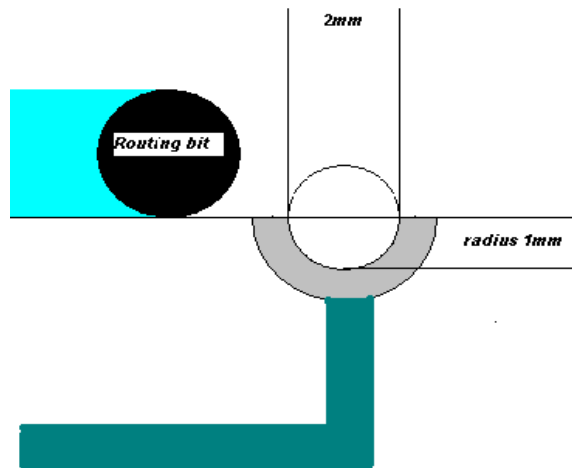
Our PCB-Pool® service does not offer scoring (please ask for a non – pool offer), all contours will be routed.

Design rules:

Almost any shape can be created by routing, however a few basic rules must be observed:

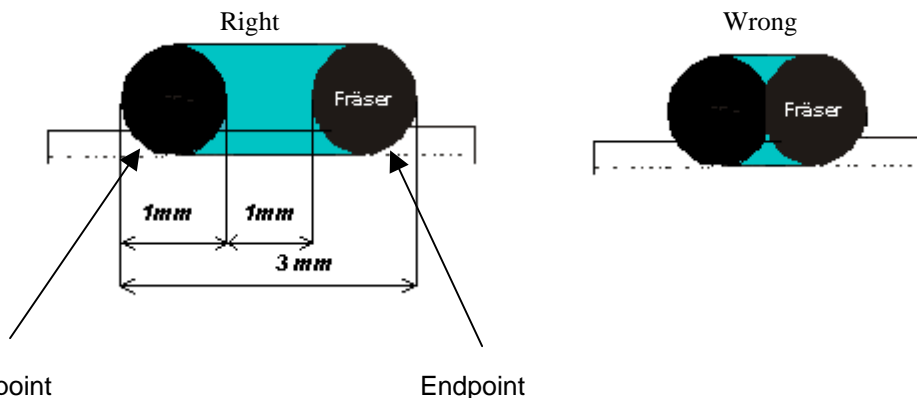
- PCB-Pool® uses two types of routing bits: 1.0mm and 2.0mm
- All structures and copper information on the board must be 0,5mm clear from the routing contour.
- Plated drills on the edge of the pcb, which should be cut by the contour, must have a diameter of 2,0mm or more and having a lasting radius of 1.0mm respectively (Picture 1)
- Outer contours can shape any angle while inner contours will produce at least the radius of the routing bit.
- Production tolerance is +- 0,1mm

Picture 1



Minimum Slotsize:

The minimum Slotsize is: 1mm x 3mm
The gap between Start- and Endpoint should be 1mm.

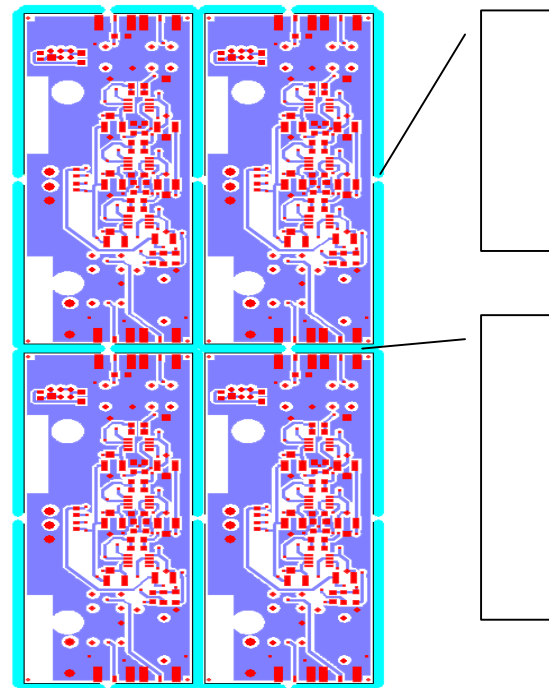


© Beta Layout Ltd. Bay 98 IRL Shannon Freezone Shannon, Co. Clare Tel. +353 61 701170 Fax. +353 61 701164	Datei: e_fraesen_neu.doc <hr/> Hotline: +353 61 701170 Internet: www.pcb-pool.com Info: info@beta-layout.com	Seite 1 von 2  <small>DIN EN ISO 9002:1994 Zertifikat Nr. 01 100 004044</small>
--	---	--

Routing boards on pips:

PCB-Pool® can rout your boards with small bars keeping them together in a multi – up. The boards can be easily separated manually e.g. after reflow soldering. The width of the bars is 1.0mm and the gap between the single boards must be 2.0mm.

Please consider that we have to charge a special fee of € 30.68 to rout on pips. Even if the contour is provided with the layout, the routing track must always be designed and customized manually in our CAM.



Routing - outline:

The exact outer margin of the routing contour is defined by the middle of the contour track used to define the outlines of the board; the radius of the routing bit will be compensated.

